

**COMPACT, ECONOMICAL, FILTRATION AND  
PURIFICATION OF CHEMICAL PROCESS  
SOLUTIONS, CLEANERS, ETCHANTS AND RINSE  
WATER**

- Flow rates to 10,000 L/Hr
- Fitted with Series "ST" magnetic coupled pumps with run dry capability \* and leak-free operation
- CPVC, POLYPROPYLENE or PVDF materials available for complete chemical resistance
- By-pass Carbon purification chambers available for fast, clean and easy organic removal
- Standard system includes
  - Socket Union Connections
  - SS Pressure Gauge
  - Vent Valve
  - Drain Valve

The SERFILCO Space-Saver "SST" series is engineered to provide reliable, high performance filtration in a small package. These robust systems feature our series ST Magnetic coupled pumps and our proven rugged design Series "S" filter chamber. The system package includes a corrosion resistant four pillar base to protect the pump motor and to support the filter chamber at a convenient height for cartridge changing. Availability in CPVC, PP, PVDF combined with EPDM or Viton elastomers provides systems to cover almost any Chemical Application.



# SERIES "SST" Performance and Specification

BULLETIN  
F-SST-1  
FEB 2012

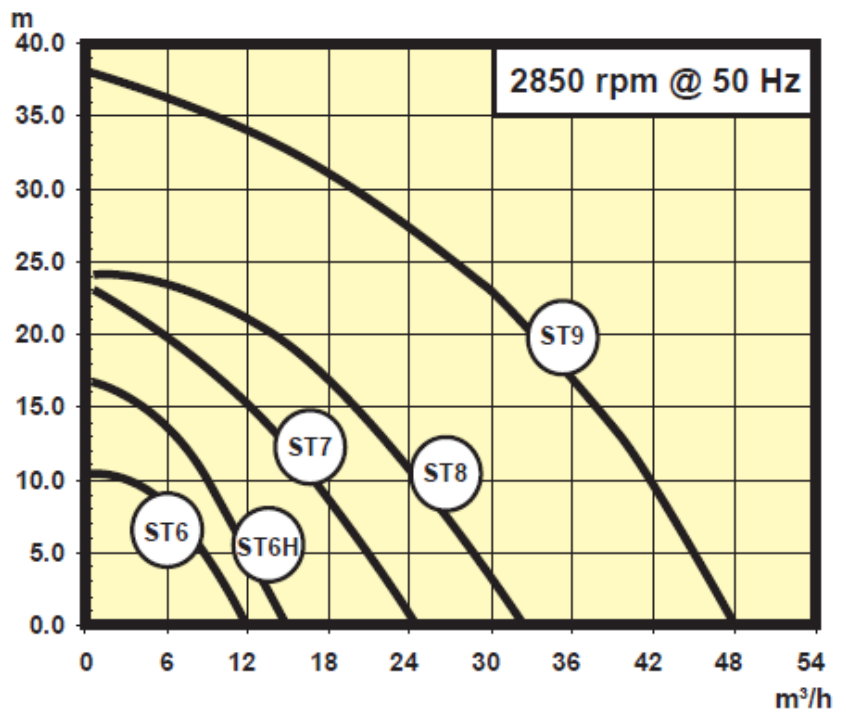
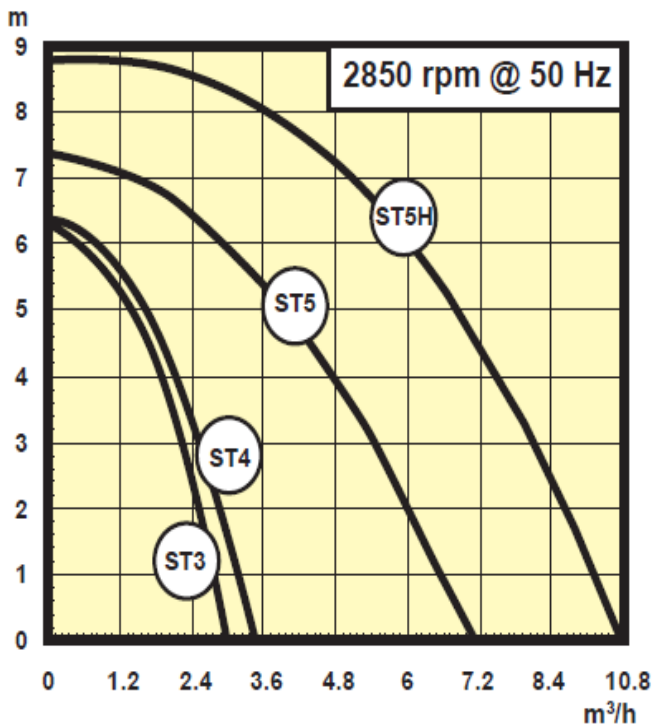
## SPECIFICATIONS

### STANDARD SPACE-SAVER "ST" SYSTEMS INCLUDE

Flow Rates to 10,000 L/hour
Series "ST" magnetic coupled pumps
Series "S" filter chamber with 3 cartridges 10" to 40"
Stainless Steel 0 - 30 psi pressure gauge
PP or PVDF Vent Valve
Initial fill of cartridges

Corrosion Resistant four pillar base
CPVC, PP OR PVDF Construction
EPDM elastomers with CPVC and PP, Viton elastomers with PVDF
Stainless Steel external fasteners
Drain Valve
3 phase IP 55, TEFC 380/420Volt 50 Hz Metric Motor

## SERIES "ST" PUMP PERFORMANCE CURVES





# SERIES 'SST' Ordering Information and Dimensions

BULLETIN  
F-SST-1  
FEB 2012

## STANDARD MODELS

Flow Rate	Cartridges	Kw	MODEL NUMBERS			Inlet x Outlet*
			PP	CPVC	PVDF	
4,000 L/hr	10"	0.25	PPSH3ST5HDM0.33	CS3ST5HDM0.33	KS3VST5HDM0.33	40mm x32mm Socket Union
	20"		PPSH6ST5HDM0.33	CS6ST5HDM0.33	KS6VST5HDM0.33	
	30"		PPSH9ST5HDM0.33	CS9ST5HDM0.33	KS9VST5HDM0.33	
7,000 L/hr	10"	0.55	PPSH3ST6DM0.75	CS3ST6DM0.75	KS3VST6DM0.75	50mm x 32mm Socket Union
	20"		PPSH6ST6DM0.75	CS6ST6DM0.75	KS6VST6DM0.75	
	30"		PPSH9ST6DM0.75	CS9ST6DM0.75	KS9VST6DM0.75	
10,000 l/hr	10"	1.1	PPSH3ST6HDM1.5	CS3ST6HDM1.5	KS3VST6HDM1.5	63mm x 32mm Socket Union
	20"		PPSH6ST6HDM1.5	CS6ST6HDM1.5	KS6VST6HDM1.5	
	30"		PPSH9ST6HDM1.5	CS9ST6HDM1.5	KS9VST6HDM15	

Standard Motors are 3 phase 50Hz, 380 – 440 Volt IE2

\*PP SYSTEMS HAVE 40MM OUTLET

For 230/240 Volt change DM to CM in code

## MODEL NUMBER MAP FOR BESPOKE SYSTEMS WITH OPTIONAL CARBON CHAMBERS AND OTHER ADDITIONAL ITEMS

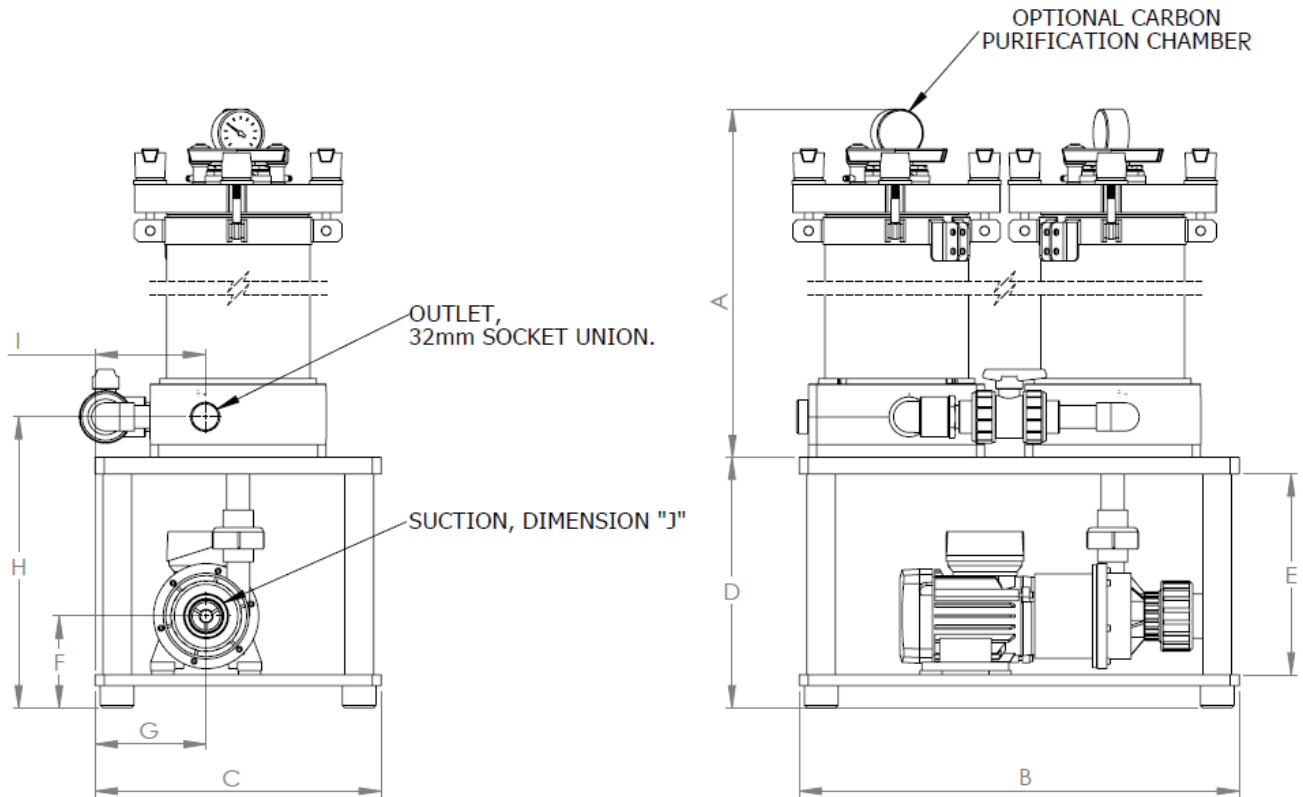
BODY MATERIAL		OUTLET SIZE		CARTRIDGE LENGTH		ELASTOMER		PUMP SERIES
Description	Model No.	Description	Model No.	Description	Model No.	Description	Model No.	Description & Model Number
Polypropylene	PP	1"	S	10"	3	EPDM		ST
CPVC	C	1.1/4" *	SH *	20"	6	Viton	V	
PVDF	K			30"	9			
				40"	12			

FLOW CURVE		PHASE		POWER		OPTIONAL EXTRAS	
Description	Model No.	Description	Model No.	kW(HP)	Model No.	Description	Model No.
3	3	1	-CM	0.06(0.08)	0.08	Carbon Chamber	-CCS
4	4	3	-DM	0.12(0.16)	0.16	Portable	-PGH
5	5			0.25(0.33)	0.33	Isolation Valves	-ISV
5H	5H			0.25(0.33)	0.33	Motor Starter	-MS
6	6			0.55(0.75)	0.75	Flexible Connections	-FL
6H	6H			1.1(1.5)	1.50	60 Hz	-60
						Trimmed Impeller	-R xx**
						Din Flange Connections	-DIN
						Ansi Flange Connections	-ANSI



## SERIES 'SST' Dimensions

BULLETIN  
F-SST-1  
FEB 2012



SYSTEM DIMENSIONS, IN MILLIMETERS

PUMP	B	C	D	E	F	G	H	I	J
ST5	508	330	289	232	106	128	336	127	40mm SOCKET UNION
ST5H	508	330	289	232	106	128	336	127	50mm SOCKET UNION
ST6	508	330	289	232	114	125	336	127	50mm SOCKET UNION
ST6H	585	430	414	344	190	173	466	195	63mm SOCKET UNION

Dimension A

10"	498
20"	752
30"	1006
40"	1260

ELECTRICAL DETAIL

PUMP	kW	Full Load Current	
		1 phase (230V)	3 phase (400V)
ST5	0.25	2.57	0.74
ST5H	0.25	2.57	0.74
ST6	0.55	4.9	1.32
ST6H	1.1	8	2.55

**Drawing shown with Optional By-pass carbon Chamber for organic management:-**

- 3 KG of Granular Activated carbon
- Held in easy change canister
- 3 micron trap filter #03PW10U
- Interconnecting valve for activation pre installed
- Additional discharge back to tank



# SERFILCO® INTERNATIONAL

Siemens Road, Northbank Industrial Estate  
Irlam, Manchester  
M44 5AH UK  
Email : sales@serfilco-international.com

Tel: +44 161 775 1910  
Fax: +44 161 775 3696  
Web: www.serfilco.com